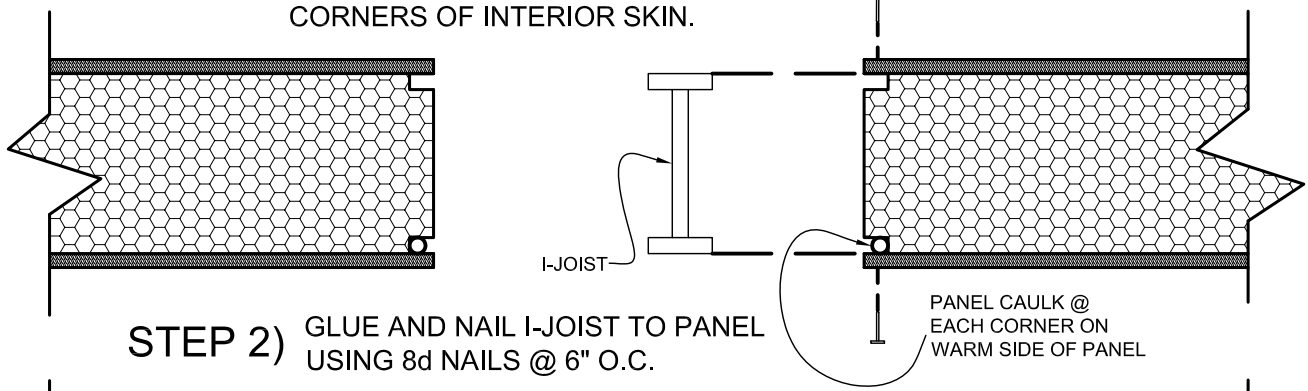


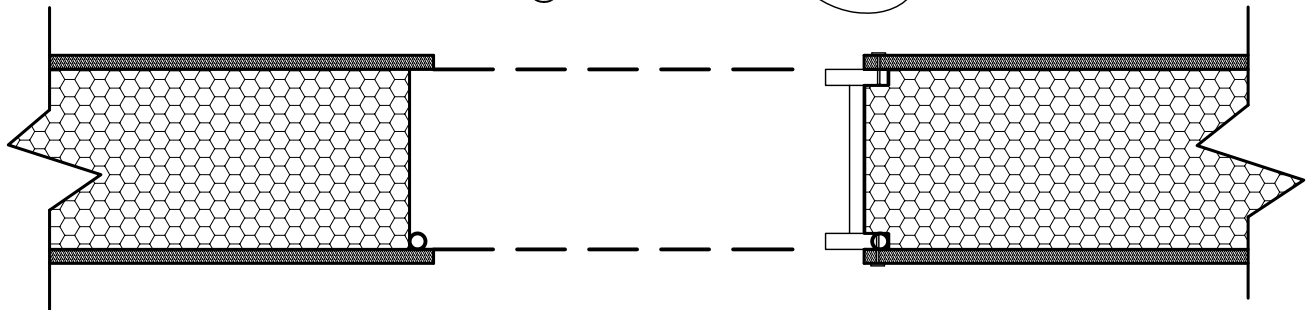
### STEP 1)

RECESS FOAM FOR CONTINUOUS I-JOIST (SIZE FOR APPLICABLE I-JOIST). RUN A BEAD OF PANEL CAULK IN CORNERS OF INTERIOR SKIN.



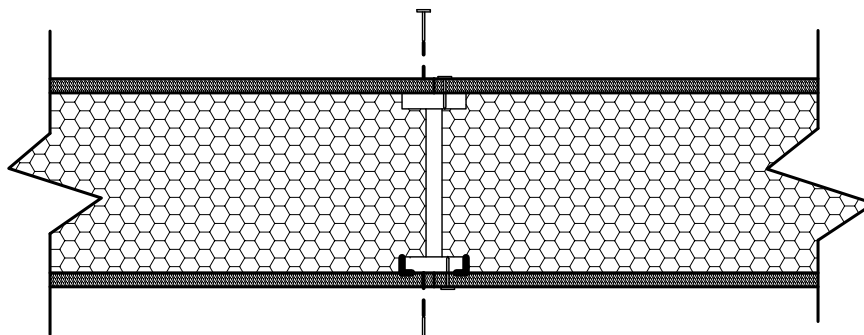
### STEP 2)

GLUE AND NAIL I-JOIST TO PANEL USING 8d NAILS @ 6" O.C.



### STEP 3)

AFTER NAILING I-JOIST TO FIRST PANEL SLIDE SECOND PANEL INTO PLACE OVER I-JOIST AND NAIL W/ 8d NAILS @ 6" O.C.



### STEP 4)

USE PANEL SCREWS @ 12" O.C. ON BOTH SIDES OF I-JOIST OVER BEARING WALL (WHERE APPLICABLE)

